



Accessing BW reports quick and easy – How Wieland Electric profits from Sweetlets solution BW Tree

"An advantage of BW Tree is that we only maintain one iView and get single sign-on to all reports... it is definitely easier for our end users."

Wieland Electric GmbH

We spoke to portal managers at Wieland Electric, a leader in the electric and electronics industry, about how Sweetlets developers and BW Tree helped them continue to provide easy access to their BW reports.

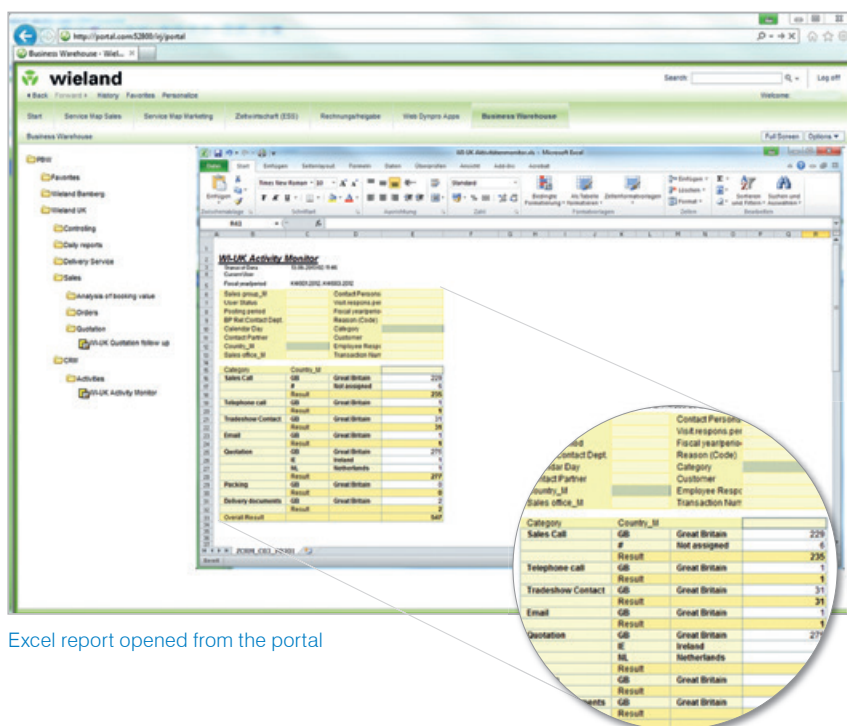
The Challenge

It's a familiar scenario of challenges that come with system upgrades. Wieland Electric had been using SAP NetWeaver BW 3.0 and were upgrading to BW 7.0. The problem was that the upgrade would mean losing BEx Browser (SAP Business Explorer Browser), a user interface that enabled users to access BW reports, configure the reports and then save them to their individual Favorites folders.

Although Wieland's portal managers had implemented service maps (links) on their portal pages to provide access to individual BW reports, this was simply not enough for users who needed to work with BW reports frequently. They needed to quickly come up with a replacement for BEx Browser, particularly the Favorites feature, an essential component for their users.

"It is simple to setup, easy to use and provides advantages that the standard portal doesn't offer, namely, access to the BW Favorites."

Wieland Electric GmbH

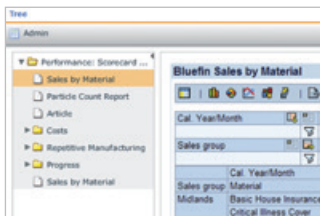


Excel report opened from the portal

BW TREE

BW Tree retrieves all end-user reports at run-time – then displays them in a nice tree.

- **Access to all Web Reports and Workbooks** in one place.
- **Avoid double maintenance** between portal and BW.
- **Allow end-users to pick their favorites.**
- **Connect to multiple BW systems.**



Access all your end-user BW reports at run-time – from a nice, organized tree.

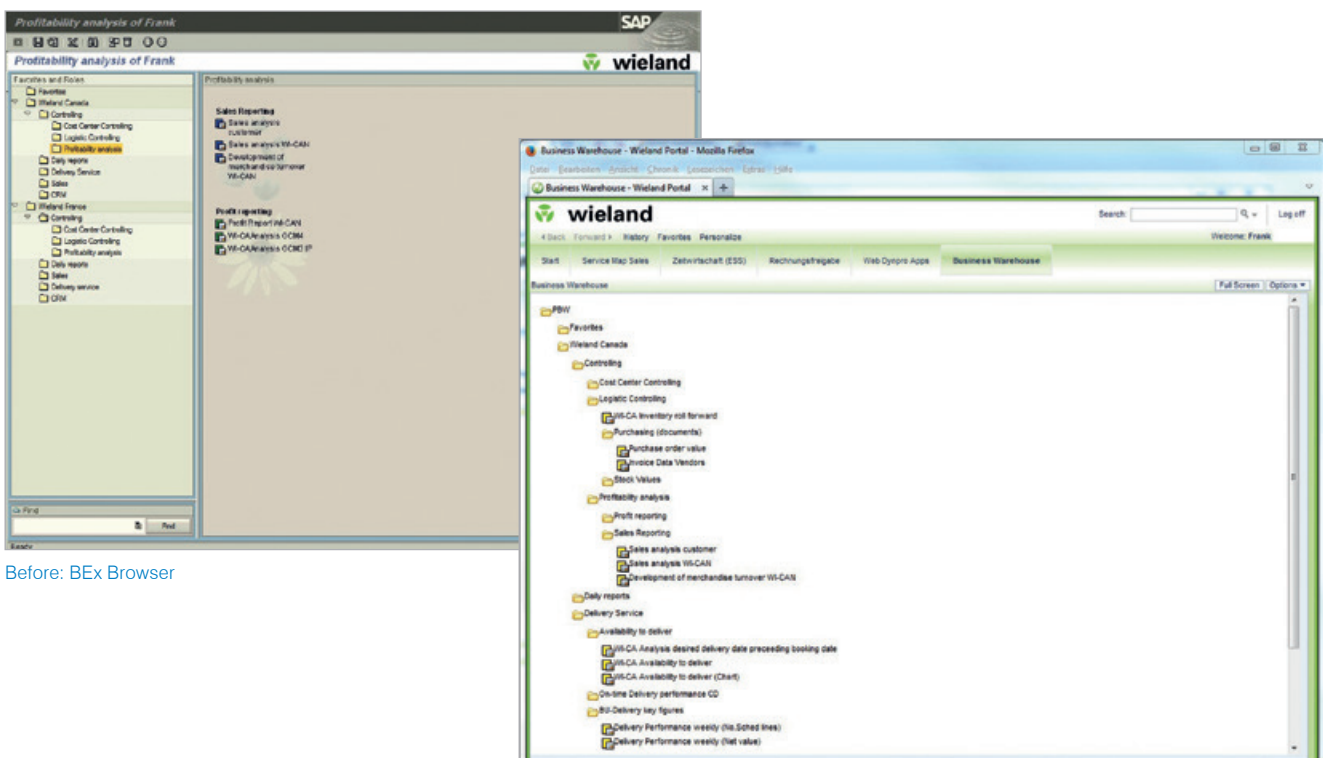
The solution

Finding the solution was simple - Wieland Electric went straight to BW Tree by Sweetlets. In recent years at a SAP user group conference in Germany (DSAG), they had already discovered other Sweetlets products (Click Stream and System Messenger), important tools which they have been using regularly ever since. Wieland Electric knew about BW Tree, and based on their positive experience with Click Stream and System Messenger, they came back to Sweetlets.

BW Tree seemed to offer the functionality they needed, and a similar product was not to be found on the market. The portal managers considered using standard SAP NetWeaver Portal features to build the function they wanted, but that would have required more effort than they were prepared to invest, and the result would not have been optimal for end users. So in a sense, the decision to use BW Tree by Sweetlets was easy.

BW Tree not only had the functionality they were looking for, it was easy to set up and maintain, and because the tool was integrated in the portal, it provided the convenience of single sign-on. However, a more important question for Wieland Electric was: Could Sweetlets developers help them build that special Favorites feature for BW Tree as provided by BEx Browser?

The answer was “yes”. Sweetlets staff not only helped Wieland Electric install and configure BW Tree, but they also developed the Favorites feature that the company wanted. Just as with BEx Browser, users can now save configured reports to a Favorites sub-folder for access at a later time.

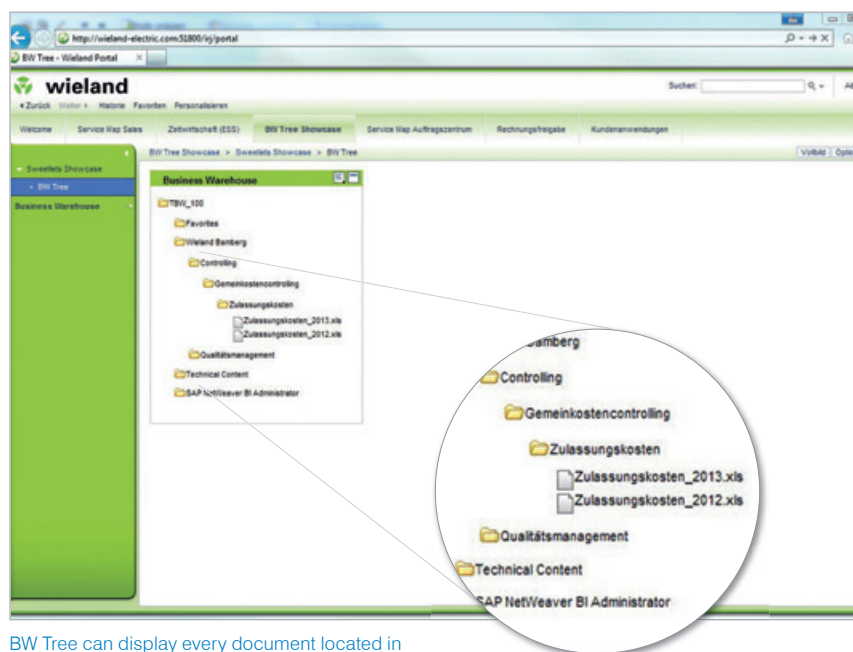


Before: BEx Browser

After: BW Tree

Portal managers at Wieland Electric also made additional customizations of their own. For example, because their BW reports are only in Excel format, they removed the Content iView from BW Tree and chose to show only the Tree iView. This proved to be an ideal solution from a usability standpoint, since the Excel reports are opened locally on the user's computer and not in the Content iView of the browser (the Content iView is useful for showing Web-based reports). They recommend this configuration to other companies that have only Excel-based reports.

The portal managers we spoke to continue to be highly satisfied with BW Tree and its ease of use, and they have received positive feedback from coworkers who use BW Tree frequently.



BW Tree can display every document located in the BW System.

Above all, they are grateful for the support they received from Sweetlets in developing the Favorites feature, which gives the tool enormous added value compared to the standard portal options. The problem of replacing BEx Browser was thus solved beyond expectations; based on this experience Wieland Electric would absolutely recommend BW Tree and Sweetlets to other companies who need this kind of tool.

CUSTOMER PROFILE

Company

Wieland Electric GmbH

Website

www.wieland-electric.com

Headquarters

Bamberg, Germany

Profile

- Medium-sized, family-owned company in the electrical and electronics industry
- A market leader in the area of pluggable installation technology for buildings
- Maintains worldwide subsidiaries and is represented in over 70 countries

Employees

2,200 employees

“BW Tree can also display every document located in the BW System. It provides significant advancements in ease of work for our end users!”

Wieland Electric GmbH

AT A GLANCE

Key Challenge

Replace the Favorites functionality of SAP BEx Browser to access BW reports

Solution

BW Tree, customized by Sweetlets for Wieland Electric

Key Benefits

- Easy deployment and configuration
- Single sign-on
- Intuitive to use
- Custom Favorites feature integrated
- Excellent support from Sweetlets team

Existing Environment

- SAP NetWeaver Portal 7.3
- SAP NetWeaver BW 7.0

Other Sweetlets products used in the company

- System Messenger – The tool for managing pop-up messages is important in their portal:
„There's nothing comparable on the market.“
- Click Stream – The portal analysis tool gives them an overview of portal usage that would not have been possible otherwise.

About Wieland Electric

Wieland Electric GmbH is a medium-sized, family-owned company in the electrical and electronics industry, and is headquartered in Bamberg, Germany. The Wieland company, which celebrated its 100-year anniversary in 2010, is among the pioneers in electrical connection technology. The internationally aligned family company, market leader in the area of pluggable installation technology for buildings, maintains worldwide subsidiaries. In addition to the production lines in Bamberg, there are also production units in the Czech Republic and China. Wieland Holding, to which STOCKO Contact GmbH & Co. KG has also belonged since 1998, is represented in over 70 countries, and includes about 2,200 employees.

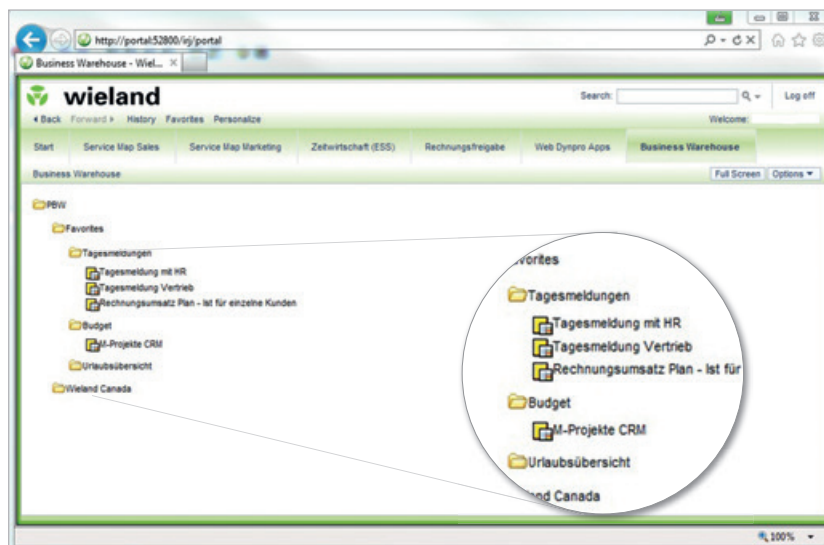
About Sweetlets and BW Tree

The Sweetlets core team of developers was instrumental in the very first portal installation way back in 2002 with SAP - and today, they continue to remain true to their roots. Sweetlets now develops user-friendly, cost effective business packages that cater specifically to the SAP NetWeaver Portal customer.

BW Tree is a tool that retrieves all BW reports of an end-user at run-time and displays them in a neat tree.

How to download BW Tree

For more information and to test drive your free, fully functional version of BW Tree to try in your SAP NetWeaver Portal, visit Sweetlets at www.sweetlets.com/bw-tree



Report tree on the portal



Wieland Electric GmbH
Brennerstraße 10-14
96052 Bamberg, Germany

Phone: +49 (0)951/9324-0
E-Mail: info@wieland-electric.com
Internet: www.wieland-electric.com



Pentland Firth Software GmbH
Unterer Anger 3
80331 Munich, Germany

Phone: +49 (0)89 / 59 08 37-0
E-Mail: info@sweetlets.com
Internet: www.sweetlets.com